

CAPNOSTAT 5 Mainstream CO<sub>2</sub> Sensor

# Delivering reliable speed

Part of the Respironics OEM Capnography portfolio  
*Trusted when every second counts*

RESPIRONICS

OEM Capnography business

# Rugged. Accurate. Reliable.<sup>1</sup>

---

When the clock is ticking and patient health is on the line, nothing should stand in the way of fast action. That's why the **CAPNOSTAT 5 Mainstream CO<sub>2</sub>** sensor is the device of choice in tough environments – like in the NICU, the field, and in first response or emergency situations – where speed is critical to outcomes.

### Product features:

- ✓ Rugged, compact housing design: solid state with no moving parts
- ✓ Fast,<sup>2</sup> accurate on-airway measurement
- ✓ No calibration required
- ✓ Single-patient use (SPU) and reusable airway adapters for all patients

<sup>1</sup> Internal data on file.

<sup>2</sup> Internal data on file.



## CAPNOSTAT 5 Mainstream CO<sub>2</sub> Sensor



### Any patient. Any setting.

The **CAPNOSTAT 5 Mainstream CO<sub>2</sub>** sensor provides reliable, fast performance, even with low sample volumes and high respiratory rates. This means for even the most compromised patient or the most challenging setting, the **CAPNOSTAT 5 Mainstream CO<sub>2</sub>** sensor arms clinicians with the information they need to deliver the best care at a moment's notice.

### Fast, accurate, compact design

The **CAPNOSTAT 5 Mainstream CO<sub>2</sub>** sensor is a standalone external device providing on-airway measurement of etCO<sub>2</sub>.

### Trusted partners in innovation

The **CAPNOSTAT 5 Mainstream CO<sub>2</sub>** sensor is one of the many advanced technologies within our portfolio. Explore the entire suite of solutions at [www.respironics-capno.com](http://www.respironics-capno.com).

The Respironics OEM Capnography business is a dedicated partner, helping medical device manufacturers create innovative solutions that make their products stand out. With comprehensive technical, clinical, and marketing support, we're here to meet the evolving needs of your growing business.



# CAPNOSTAT 5 Mainstream CO<sub>2</sub> Sensor

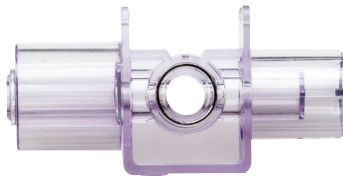
## Mainstream CO<sub>2</sub> Accessories

DESCRIPTION	PART NUMBER	QUANTITY/PKG
Single-Patient Use Airway Adapter — Pediatric/Adult	6063-00	10
Single-Patient Use Airway Adapter — Infant/Neonatal	6312-00	10
Single-Patient Use Airway Adapter with Mouthpiece — Adult	6421-00	10
Reusable Airway Adapter — Adult	7007-01	1
Reusable Airway Adapter — Infant/Neonatal	7053-01	1

## Single-Patient Use Airway Adapters



SPU Airway Adapter — Adult/Pediatric

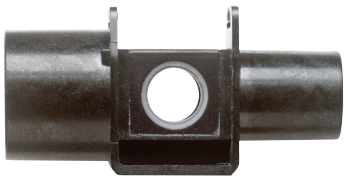


SPU Airway Adapter — Infant/Neonatal

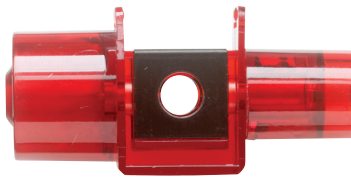


SPU Airway Adapter with Mouthpiece

## Reusable Airway Adapters



Reusable Airway Adapter — Adult



Reusable Airway Adapter — Infant/Neonatal

## Combined CO<sub>2</sub>/Flow Accessories

DESCRIPTION	PART NUMBER	QUANTITY/PKG
Combined CO <sub>2</sub> /Flow Sensor — Adult/Pediatric	6719-00	10
Combined CO <sub>2</sub> /Flow Sensor — Pediatric	6716-00	10
Combined CO <sub>2</sub> /Flow Sensor — Neonatal	6720-00	10



Purple = Neonatal  
 Clear = Adult/Pediatric  
 Green = Pediatric



## CAPNOSTAT Mainstream CO<sub>2</sub> Sensor - Specifications

TRANSDUCER TYPE	MAINSTREAM CO <sub>2</sub> SENSOR
Sensing Technology	Non-dispersive infrared (NDIR) single beam optics, dual wavelength, no moving parts
Initialization Time	Capnogram, displayed in less than 15 seconds, at an ambient temperature of 25°C, full specifications within 2 minutes
CO <sub>2</sub> Measurement Range	0 to 150 mmHg, 0 to 19.7%, 0 to 20 kPa
Rise Time	Less than 60 ms
CO <sub>2</sub> Resolution	0.1 mmHg      0 to 69 mmHg 0.25 mmHg     70 to 150 mmHg
CO <sub>2</sub> Accuracy	0 – 40 mmHg    ±2 mmHg 41 – 70 mmHg   ±5% of reading 71 – 100 mmHg   ±8% of reading 101 – 150 mmHg ±10% of reading
Measurement Frequency	100 Hz
Respiration Rate Range	1 to 150 Breaths Per Minute (BPM)
Respiration Rate Accuracy	±1 Breaths Per Minute (BPM)
Compensations (Supplied by Host)	Barometric pressure: 400 mmHg to 850 mmHg Operator selectable O <sub>2</sub> , N <sub>2</sub> O, He and agent compensation
Calibration	No routine user calibration required. An airway adapter zero is required when changing to a different style of airway adapter.
Airway Adapters	Deadspace < 6 cc (Adult/Pediatric), < 1 cc (Infant/Neonatal) Adapter taper meets ISO 5356-1
Combined CO <sub>2</sub> / Flow Accessories	Deadspace < 9 cc (Adult), < 4 cc (Pediatric), < 1 cc (Infant/Neonatal)
Voltage Requirements	5.0 VDC ±5%
Power Rating	Rated input: 1.1 Watts typical, steady state Up to 1.5 Watts maximum on power up (warm up)
Interconnection	Standard - Lemo Redel Style 8-pin plastic LoFlo and CAPNOSTAT are interchangeable with the host monitor Common connector allows easy exchange between mainstream and sidestream monitoring
Temperature and Humidity	Operating: 0 to 45°C, 10 to 90% RH, non-condensing Storage: -40 to 70°C, <90% RH, non-condensing
Water Resistance	IPX4 – Splash-proof (sensor head only)
Mechanical Environment	IEC TR 60721-4-7 Class 7M3 IEC 60068-2-64 Random Vibration IEC 60068-2-27 Shock IEC 60068-2-31 Free Fall IEC 60601-1 (EN 60601-1) § 15.3 Able to withstand 6-foot drops while operating Cable can withstand a pull of 30 lbs. The cable can withstand 10,000 bend cycles
Data Interface	RS232 compatible, bi-directional, 19200 baud, standard N-8-1
Data Output	CO <sub>2</sub> gas concentration (mmHg), end-tidal CO <sub>2</sub> , inspired CO <sub>2</sub> , respiratory rate






RESPIRONICS

OEM Capnography business

©2024 Koninklijke Philips N.V. All rights are reserved. Specifications are subject to change without notice. Trademarks are the property of Koninklijke Philips N.V. or their respective owner. All marks used in this leaflet are owned by Respironics Inc. or its affiliates or subsidiary companies.

Caution: U.S. federal law restricts these devices to sale by or on the order of a physician.

4108869.01

 Philips Medical Systems Nederland B.V.  
Veenpluis 6  
5684PC Best, The Netherlands



+1 724 387 4000  
800 345 6443 (toll free, US only)

[www.respironics-capno.com](http://www.respironics-capno.com)

00000684-00-00 \* Dec 2024